

OCTOBER 2011 MATERIALS UPDATE

Material ConneXion®

As part of our promise to provide our clients with the newest and most innovative materials sourced from around the world, we are pleased to present our monthly Materials Update. Here you will find the latest materials to have been added to the database, upon their acceptance by our regular jury process.

These materials can be seen online and on-site at our New York location. Selected materials are also available at our Cologne, Daegu, Milan, and Bangkok locations; please call or email us at any of the addresses listed for more information.

Interested in these materials but not a client? Our subscription-based Materials Library is the world's largest library of advanced, innovative and sustainable materials and processes. With 45-60 new materials added every month, our libraries around the world give you immediate access to 6,000 materials onsite and online, Material Specialists and Monthly Updates on what's new.

Become a member of Material ConneXion® today!

Contact us at 212 842 2050 or access@materialconnexion.com to find out about more about membership levels and benefits.

Need hands-on expertise?

Our Advanced Material Solutions Team™ provides a wide array of consulting services. Contact us at consulting@materialconnexion.com or call today.

Andrew H. Dent, PhD

Vice President, Library & Material Research

Material ConneXion®

P +1 212 842 2050

E adent@materialconnexion.com

W www.materialconnexion.com

Chompoonuj Weerakitti

Director, Library & Materials Research

Material ConneXion® Bangkok

P +66 (0) 2 664 8448

E cweerakitti@materialconnexion.com

W www.materialconnexion.com/th

Karsten Bleyemehl

Director, Library & Materials Research

Material ConneXion® Cologne

P +49 (0) 221 99 22 28 - 22

E kbleymehl@materialconnexion.com

W www.materialconnexion.com/de

Sun Ah Kim

Director of Library & Consulting

Material ConneXion® Daegu

P +82 53 740 0033

E sakim@materialconnexion.com

W www.materialconnexion.com/kr

Micol Costi

Director, Library & Materials Research

Material ConneXion® Milano

P +39 02 36553060/36553169

E mcosti@materialconnexion.com

W www.materialconnexion.com/it

OCTOBER 2011 MATERIALS UPDATE

Material ConneXion®

CATEGORY INDEX

Carbon

Cement

Metal

Glass

Polymer

Ceramic

Natural

Process

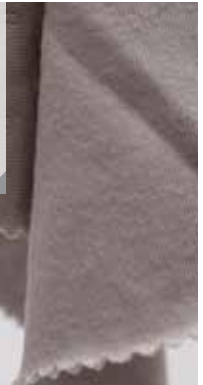
MC#: 1930-07

This durable, vapor permeable fluid applied weather barrier coating is a low-VOC, elastomeric polyether-based product with good elasticity and flexibility. It is an alternative to housewrap. It can be applied to concrete masonry, gypsum sheathing, brick, and metal panels.



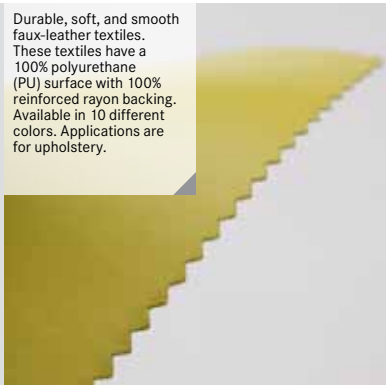
MC#: 2499-09

Textiles made from a blend of Tencel® fibers and organic cotton. The Tencel® fibers are produced from wood and feature good moisture management, 'skin-friendliness', reduced bacterial growth and strength. Applications are for apparel.



MC#: 3687-03

Durable, soft, and smooth faux-leather textiles. These textiles have a 100% polyurethane (PU) surface with 100% reinforced rayon backing. Available in 10 different colors. Applications are for upholstery.



MC#: 3687-04

A luxury leather alternative that has a two-toned texture with an anti-microbial finish. It is composed of a 100% PU surface with 65% PET, 35% rayon backing simulating the look and feel of leather. Applications: upholstery.



MC#: 3687-05

A durable luxury leather alternative that was formulated with high-tech strengthening components. It is composed of a 100% PU surface with 100% reinforced rayon backing simulating the look and feel of leather. Applications: upholstery.



MC#: 3687-06

A luxury leather alternative that has a ponyhair effect. The fabric is composed of a 100% PU surface with 65% polyester, 35% rayon backing and simulates the look and feel of leather. Applications include upholstery for office, residential, and aviation spaces.



MC#: 4438-14

Decorative multicolored textile that used in drapery and interior designs. This fabric has a unique composition consisting of 50% metal, 32% polyester, 12% cotton, and 6% linen resulting in the fabric having a weigh of 200 g/m². Applications are for interior drapery.



MC#: 4438-15

Interior decorative drapery fabric material that is composed of 50% cotton, 33% metal and 17% polyester. It has a weight of 118 g/m² and is offered in seven different colors with width lengths of 1480 mm (58.3 in). It is used as interior decorative drapes.



MC#: 4457-04

Custom formed reflectors used to create efficient lighting. These proprietary, polymeric-based reflectors increase the optical efficiency of light fixtures by using precise specular mirror optics to raise the lumen output. Applications are for lighting.



MC#: 5190-05

Upholstery textile with a 100% PU face with a 100% biodegradable stretch knit viscose backing. The fabric is durable, lightfast (40 hours AATCC 16), and exceeds 200,000 double rubs according to the Wyzenbeek scale. Applications are for upholstery.



MC#: 5190-06

Decorative textile that has a stain repellent finish. Composed of 38% cotton, 38% nylon, 15% viscose, 9% polyester with an acrylic backing. It is durable, lightfast, and exceeds 50,000 double rubs on the Wyzenbeek scale. Applications are for upholstery.



OCTOBER 2011 MATERIALS UPDATE

Material ConneXion®

CATEGORY INDEX

Carbon

Cement

Metal

Glass

Polymer

Ceramic

Natural

Process

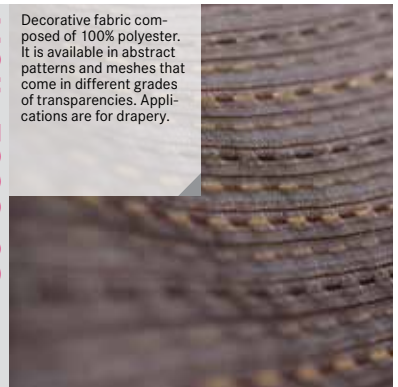
MC#: 5190-07

A luxury leather alternative fabric that has a distinct surface that mimics the hide of a crocodile. 100% PU face with a Write-Off (ink resistant) finish and a 4-way stretch knit polyester backing. Applications are for indoor and outdoor upholstery.



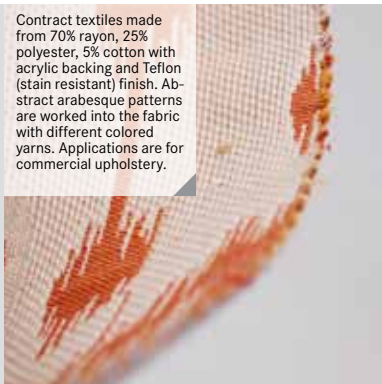
MC#: 5998-02

Decorative fabric composed of 100% polyester. It is available in abstract patterns and meshes that come in different grades of transparencies. Applications are for drapery.



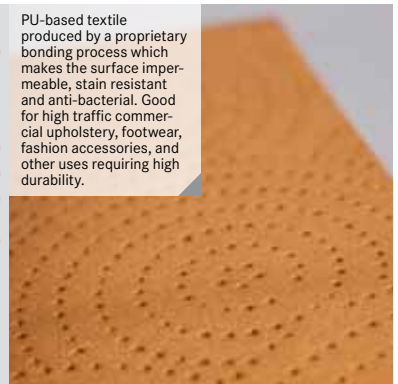
MC#: 5998-04

Contract textiles made from 70% rayon, 25% polyester, 5% cotton with acrylic backing and Teflon (stain resistant) finish. Abstract arabesque patterns are worked into the fabric with different colored yarns. Applications are for commercial upholstery.



MC#: 5998-05

PU-based textile produced by a proprietary bonding process which makes the surface impermeable, stain resistant and anti-bacterial. Good for high traffic commercial upholstery, footwear, fashion accessories, and other uses requiring high durability.



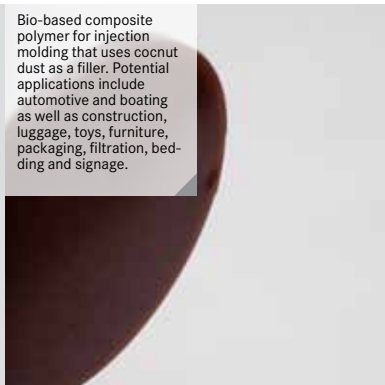
MC#: 5998-03

Contract textiles made from 100% polyester. It is available in colorful patterns and blends. The textile is 54 in (137 cm) wide and is available in a wide range of colors. It complies with NFPA 701 for flammability testing. Applications are for drapery.



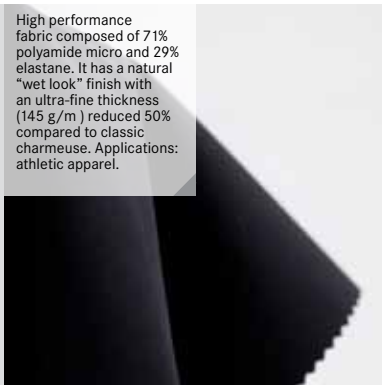
MC#: 6669-02

Bio-based composite polymer for injection molding that uses coconut dust as a filler. Potential applications include automotive and boating as well as construction, luggage, toys, furniture, packaging, filtration, bedding and signage.



MC#: 6765-10

High performance fabric composed of 71% polyamide micro and 29% elastane. It has a natural "wet look" finish with an ultra-fine thickness (145 g/m²) reduced 50% compared to classic charmeuse. Applications: athletic apparel.



MC#: 6797-09

Ultra-light, breathable, soft two-way stretch fabric that is non-deformable and will not exhibit curling even after multiple wash cycles. It is made of 90% cotton and 10% elastane and has a weight of 160 g/m². Applications are for intimate wear.



MC#: 6797-10

Soft stretch-effect fabric that molds to the body or structure it is applied to, resulting in a perfect fit. It is comprised of 91% nylon and 9% elastane, having a weight of 200 g/m². It is currently used to create athletic clothing and apparel for dance - fitness and running.



MC#: 6817-02

Decorative metal laminates. These sheets comprise 11% metal foil with the remaining product consisting of layers of phenolic impregnated kraft paper. Used for interior decorative applications, as well as cabinet doors, displays, columns, and slat wall.



MC#: 6824-01

Noncombustible acoustic wall paneling composed of fiberglass from recycled bottles (85-97%) and 3-5% binder covered in a woven fabric. It is made from sheets of high density glass wool. Used as sound absorbing panels for ceilings, and furniture fronts.



OCTOBER 2011 MATERIALS UPDATE

Material ConneXion®

CATEGORY INDEX

Carbon

Cement

Metal

Glass

Polymer

Ceramic

Natural

Process

MC#: 6826-02

3-D PU foam wall tile laminated with 100% recycled PET felt fabric. They have sound-reducing and sound-absorbing properties. Applications are for walls, ceilings, partitions, furniture, and cubicles.



MC#: 6833-01

A patented aluminum anodizing process that incorporates a micro-crystalline barrier surface offering greater resistance to corrosive environments such as dishwashers. Available in a wide range of colors and the process can be licensed from the vendor.



MC#: 6834-01

Hand-crafted textiles made from peacock feathers. These textiles are 72% rayon, 18% peacock feathers, and 10% silk, creating a velvet-like material with a surface pile of peacock feathers. Applications are for upholstery, pillows, wall panels, and apparel.



MC#: 6835-01

Low-environmental impact underlayment used for tile and non-tile applications. It consists of water-resistant gypsum board produced with a patented proprietary Enhanced Glass Reinforced Gypsum Technology. Used in wet and non-wet areas.



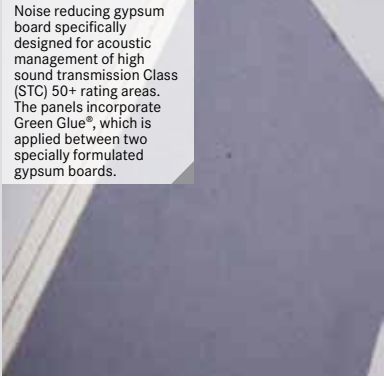
MC#: 6835-02

A gypsum board alternative that enhances indoor air quality by reducing VOC's in the surrounding air. It permanently converts VOC's into safe, inert compounds, working for up to 75 years. Used as an alternative to gypsum board.



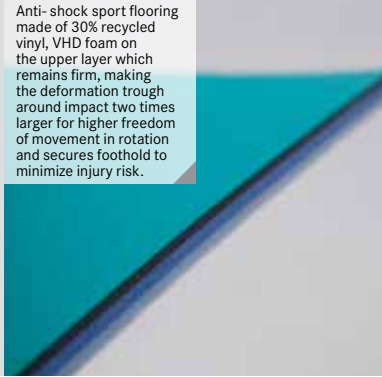
MC#: 6835-03

Noise reducing gypsum board specifically designed for acoustic management of high sound transmission Class (STC) 50+ rating areas. The panels incorporate Green Glue®, which is applied between two specially formulated gypsum boards.



MC#: 6836-01

Anti-shock sport flooring made of 30% recycled vinyl, VHD foam on the upper layer which remains firm, making the deformation trough around impact two times larger for higher freedom of movement in rotation and secures foothold to minimize injury risk.



MC#: 6837-01

Sample and trial-size packaging. This packaging material is constructed using 75% post-consumer recycled unbleached kraft material, PP, and foil. It uses 93% less plastic than similar sized bottles and tubes. Applications are for packaging.



MC#: 6838-01

3-D decorative wall panels for indoor and outdoor use. 100% ABS for indoor use and 100% PC for outdoor use. They are durable, recyclable, have high impact resistance, are lightweight and are easy to install. Applications are for wall décor.



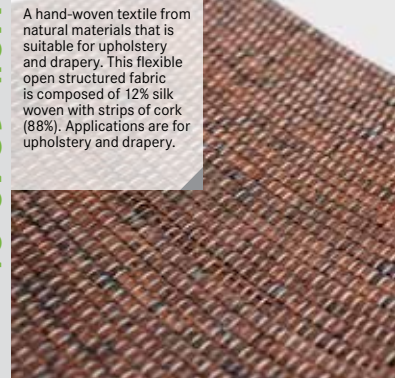
MC#: 6839-01

Hard, natural fiber and polymer composites that are composed of waste materials from rice harvesting and production. They are made of 80-92% rice husks and 8%-20% natural bonding material. For tableware, in the chemical industry and for agriculture.



MC#: 6840-01

A hand-woven textile from natural materials that is suitable for upholstery and drapery. This flexible open structured fabric is composed of 12% silk woven with strips of cork (88%). Applications are for upholstery and drapery.



OCTOBER 2011 MATERIALS UPDATE

Material ConneXion®

CATEGORY INDEX

Carbon

Cement

Metal

Glass

Polymer

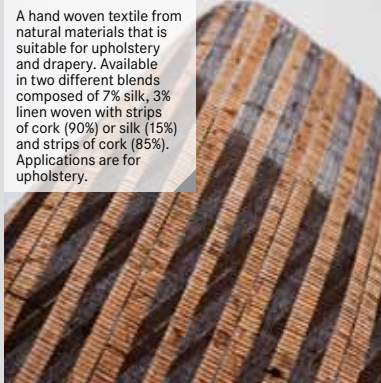
Ceramic

Natural

Process

MC#: 6840-02

A hand woven textile from natural materials that is suitable for upholstery and drapery. Available in two different blends composed of 7% silk, 3% linen woven with strips of cork (90%) or silk (15%) and strips of cork (85%). Applications are for upholstery.



MC#: 6840-03

Hand-woven fabric composed of 100% flax fibers. This fabric has been woven with a pattern that creates a visual and tactile three-dimensional effect. Applications are for upholstery and drapery.



MC#: 6840-04

Hand-woven fabric composed of 100% flax fibers. This fabric has an open structure weave pattern with a blend of different colored yarn that created a visual three-dimensional effect. Applications are for upholstery.

