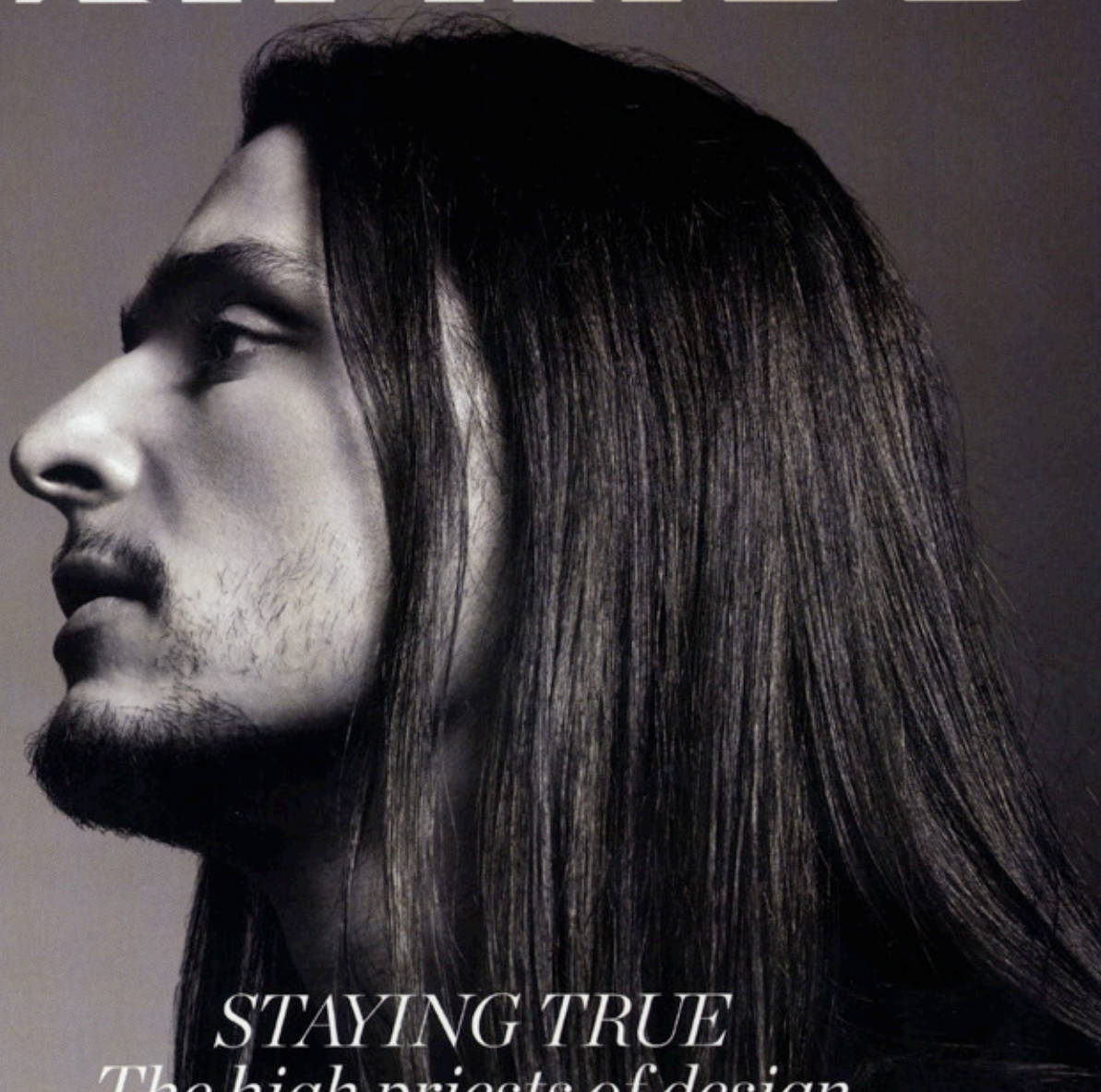


# surface



*STAYING TRUE*  
*The high priests of design*  
*who keep the faith*

*Kiki van Eijk*  
Adds Her Personal  
Touch to Furniture

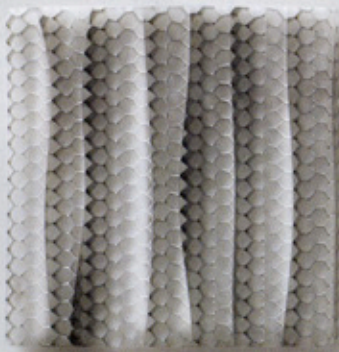
*Olivier Theyskens*  
Brings Demi-Century  
to Theory

OCTOBER 2011  
DISPLAY UNTIL OCTOBER 24





01



04



02



05



03



06

## Substance Reuse

WE'RE ADDICTED TO THESE INNOVATIONS THAT RETHINK PRACTICAL MATERIALS.

PHOTO TOM HAYES

*In this column, we ask Material Connexion vice president Andrew Dent, Ph.D., to select six innovations set to influence what designers will be using tomorrow.*

**01** Kapok Fiber by Jarupun Mattress Company offers a lighter and softer alternative to widely used cotton stuffing, which because of floods in cotton-growing Pakistan and Australia, no longer comes cheap. Cultivated in the

rainforests of Southeast Asia and Central and South America, Kapok Fiber is harvested from the fluffy fiber-filled seedpods of the kapok tree and can be used to stuff anything from pillows to teddy bears.

**02** Rubitherm Technologies has created a powerful new material called Rubitherm GR that holds within its pores a chemical that can change from solid to liquid in order to absorb excessive heat or, in turn, to release heat when things cool down. This makes it useful for construction, clean air-conditioning, solar-energy storage, and for food and pharmaceutical transport, as well as high-tech textiles.

**03** Vulcanization, the process of turning virgin rubber into stable, car-tire rubber, has never been an economically viable process—until now. Green Rubber, manufactured using a new process to de-vulcanize used material by breaking its chemical bonds, results in a virgin-like product. Instead of taking up space in landfills, more tires can be recycled.

**04** To manufacture Inclusion, a paneling material available in both opaque and transparent versions, France-based Lamellux combines resin with hexagonal aluminum honeycomb. Variable optics can provide privacy, with the honeycomb obscuring vision when viewed at an angle and appearing transparent when viewed straight-on—ideal for doors and ceilings, plus retail, office, and hospitality spaces.

**05** Although CTL-TH Packaging's cost-efficient, highly recyclable Easy Supply Tube looks like an ordinary polypropylene container, it's anything but. Developed in an in-mold labeling process, high-resolution images are applied via thin graphic films, thus eliminating traditional (and pricey) printing processes.

**06** American Lime Technology's Tradical Hemcrete, a non-combustible hemp and lime material, offers a green alternative to concrete building envelopes. In pre-cut blocks or poured, it's as durable as cement. And carbon negative.—AVA BURKE AND ALLIE WEISS